



JÖNKÖPING UNIVERSITY

# Annual Report on External Relations and Visibility

at the School of Engineering 2021



Excellence in collaboration



## CONTENT

The Importance of collaboration .....	3
External Relations at the School of Engineering .....	3
The External Relations Council and its members 2021.....	3
The External Relations Team.....	4
Summary of activities registered during 2021.....	4
International Campus.....	4
Some highlights of the year.....	5
Accreditation from ACEEU .....	5
The SPARK conference, Xjobbsmässan .....	6
Meeting with strategic partners in SPARK, Septemberljus .....	7
Alumni of the year, VERA-dagen, Karriärum .....	8
Elmia subcontractor, SPARK talks, Kerstin Johansen receives collaboration award ..	9
Spark ECG, Company ECG.....	10
Visibility.....	11
Updates on the web.....	11
National advertising.....	12
Printed matter, Student recruitment.....	14
New additions to the image bank, Updated photo wall in the JTH lobby .....	15
Linkedin, instagram, Newsletter .....	16
Internal communication .....	18
Company list 2021 .....	19

## THE IMPORTANCE OF COLLABORATION

The School of Engineering (JTH) at Jönköping University develops and maintains extensive external relationships with the surrounding society both regionally, nationally and internationally. Thereby, building a strong and attractive academic environment in Jönköping while ensuring that JTH contributes to the renewal and development of society. External relationships increase our opportunities for skills provision, continuing professional development and applied research.

## COLLABORATION AT THE SCHOOL OF ENGINEERING

The External Relations Council is led by the External Relations Manager. With the exception of the Department of Mathematics, Physics and Chemistry, each of the school's departments has one or more representatives on the External Relations Council.

### The members' assignment is as follows:

For each department, 20% of a full-time equivalent is set aside for duties on the External Relations Council (exceptions may apply). The assignment can be shared by one, two or three individuals.

### The member shall:

represent their department at external relations meetings and JTH in its entirety in contacts with external partners;

- in cooperation with other departmental staff, continuously seek out new, process old and nurture existing corporate assignments;
- be able to showcase the entire range of external relations (industrial placement courses (IPC), thesis projects, applied research, lifelong learning and competence development, higher vocational education, etc.);
- plan and structure work to ensure that annual goals are achieved; and
- submit a quarterly report on the activities conducted together with partner companies by each department, provide continuous feedback to the External Relations Manager and head of department and attend External Relations Council meetings.

JTH strives for a win-win situation between JTH and the business community.

---

## THE EXTERNAL RELATIONS COUNCIL AND ITS MEMBERS 2021



**External Relations Manager**  
Linda Bergqvist



**Research utilisation**  
Jenny Bäckstrand



**Project Manager, External Relations**  
Stefan Brolin



**Construction Engineering and Lighting Science**  
Thomas Olsson, 10%  
Kharin Abrahamsson, 10%



**Materials and Manufacturing**  
Nils-Eric Andersson, 10%



**Product Development, Production and Design**  
Conny Larsson, 20%



**Computer Science and Informatics**  
Sonny Johansson, 10%  
Gunnar Hellsten, 10%



**Supply Chain and Operations Management**  
Magnus Vårbrandt, 20%



**Vocational Education**  
Anita Brun Nilsson

## THE EXTERNAL RELATIONS TEAM

In 2021, the External Relations Team consisted of External Relations Manager Linda Bergqvist, Project Manager Stefan Brolin, who focuses on lifelong learning and SPARK ECG, Jenny Bäckstrand, Project Manager for international accreditation in external relations, and LisaBeth Sundström, recently appointed project coordinator for external relations, with a focus on student activities such as Karriärum, Xjobbsmässan and VERA-dagen.



**Linda Bergqvist**  
External Relations Manager



**Stefan Brolin**  
Project Manager, External Relations



**Jenny Bäckstrand**  
Accreditation Project Manager



**LisaBeth Sundström**  
Project coordinator

## SUMMARY OF ACTIVITIES REGISTERED DURING 2021

As was the case the previous year, 2021 proved challenging due to the COVID-19 pandemic, which continued to affect JTH and our ability to collaborate. Despite the pandemic, the External Relations Council and the External Relations Team report the following figures:

During 2021, a total of **2 269** external relations activities were conducted. These included:

<b>407</b> students undertaking IPC and/or thesis projects with companies	<b>247</b> research activities
<b>112</b> guest lectures	<b>7</b> externally employed doctoral students
<b>31</b> study visits to companies	<b>15</b> thesis projects within research projects
<b>44</b> cases from companies in courses	<b>54</b> sponsors
<b>123</b> companies developing joint research grant applications	<b>51</b> networking activities
	<b>119</b> companies active in higher vocational education

The total number of reported companies with whom JTH staff have had contact (physical or digital) in 2021, based on figures from the External Relations Council and the External Relation Team:

**715 unique companies!**  
+ 32 other higher education institutions

## INTERNATIONAL CAMPUS

The International Campus program at JTH ensure that students can complete their placements or degree projects in collaboration with a company overseas, often in combination with academic studies.

Physical visits during 2021:

**7** universities in the USA

**4** universities in Thailand

**6** companies in the USA

**5** companies in Thailand

Some of the companies visited:

Electrolux, Husqvarna, Volvo Trucks and IKEA.



# INTERNATIONAL STAMP OF QUALITY FOR THE SCHOOL OF ENGINEERING

JTH was awarded the accreditation Engaged University by the international organisation the Accreditation Council for Entrepreneurial and Engaged Universities (ACEEU), receiving the grade Excellent in three categories.

In its final report, the ACEEU writes that JTH performed exceptionally in its evaluation and was therefore unconditionally awarded the accreditation Engaged University. This decision was greeted with great delight. “Absolutely splendid, we are incredibly proud of this accreditation. It is an international stamp of quality that validates that we are doing the right things in the right way in terms of preparing our students for professional life by interweaving theory with practice. The accolade Engaged University means that we are engaged in and contribute to society. This accreditation will undoubtedly open new doors for us and it shows that the research we conduct with our partner companies makes a real difference,” says Ingrid Wadskog, managing director and dean of JTH.

## Engagement and excellence

ACEEU is a global quality-assurance body based in Germany, dedicated to recognising and promoting entrepreneurship and engagement in higher education, so that higher education institutions can exert greater social, economic and cultural influence. According to the ACEEU, the accreditation Engaged University underlines the highlights education institutions’ engagement and excellence and sends a clear message to students, the business community, academic partners, staff and financiers that the institution is a skilled collaborator.

## Close collaboration with industry

Having performed an external review of JTH’s close collaboration with industry, the ACEEU awarded the school the grade Excellent in the categories leadership, culture and education. ACEEU underlines that JTH’s values and approach to leadership combine to promote

engagement and that the school’s culture is also built on engagement. Furthermore, the report states that external stakeholders enrich students’ learning experiences and open the way to a wide range of career opportunities in the private, public and non-profit sectors.

## A network with similar ambitions

External Relations Manager Linda Bergqvist explains that this accreditation gives JTH access to a network of higher education institutions with similar ambitions that are keen to collaborate and remain relevant to the business community and society at large.

“It’s no coincidence that we collaborate with some 600 companies every year. These external relationships ensure the relevance of the education and research we conduct and deliver to society. We have always done so and now we have received official recognition that we are good collaborators. This accreditation will benefit us in future when, for example, we are looking for collaborators or recruiting staff,” says Linda Bergqvist.

In conjunction with the accreditation, a video was produced to show how JTH and some of its partners view external relations. Scan the QR code to watch the video.



Learn more about the ACEEU at [aceeu.org](https://aceeu.org).



Lars Eriksson, professor of industrial design at JTH in the armchair that his students have developed in collaboration with Ikea.



The students in the project and their teacher Lars Eriksson during a visit to the Ikea Museum in Almhult.

JTH’s new accreditation received considerable attention, including on SVT, which covered both the accreditation and the launch of an IKEA armchair with a help function developed by Jönköping University students, an excellent example of the benefits of students collaborating with the business community. Students are able to meet companies and apply theory to practical challenges, while companies have the opportunity to meet the future workforce and develop their products alongside committed, innovative students.

## THE SPARK CONFERENCE ON LIFELONG LEARNING 22 APRIL 2021

The conference provides a forum for the business community, academia and the public sector to meet and discuss how lifelong learning can strengthen the competitiveness of the region's manufacturing companies.

The 2021 conference was held online for approximately 130 delegates.

### SPARK Award

The SPARK Award has been presented annually since 2018 to researchers and partner companies who have demonstrated a high level of collaborative skill.

JTH researchers **Annika Engström** and **Judit Svidró** received the SPARK Award during the SPARK Conference for the projects *Innovate* and *New Generation of Foundry Sands* (NGFS) respectively.

Judit Svidró is delighted by the good collaboration she enjoys with the companies in the NGFS project.

"Our research results were immediately utilised by the companies to develop processes and internal innovations for more sustainable production and to reduce environmental impact," she says.

Bruzaholms Bruk is one of the partner companies in NGFS. CEO Lars Alfredsson emphasises that the research provides the company with vital knowledge for production and development.

"We are delighted to be part of this project. Among other things, it has given us methods for optimising foundry sands for casting," he says.

Annika Engström views the award as important recognition that she and her colleagues in Innovate

are on the right track and have found the right form of collaborative research.

"We are aware that we have received the SPARK Award in competition with many talented researchers and driven companies, something that naturally makes us extremely proud," she says.

Engström and her colleagues in Innovate have identified a number of methods and approaches to strengthen the innovative ability of small and medium sized enterprises.

One of the partner companies is Lundbergs Pressgiuteri, and CEO Cajsa Lundberg has found it an enjoyable and energetic project to be part of.

"It has given us a great deal in terms of knowledge about innovation. Annika has made us realise our strengths. I would love to have her as a coach in everything," says Lundberg.



The winners of SPARK award 2020 and 2021, Annika Engström and Judit Svidró, researchers at JTH.

## XJOBBSMÄSSAN, 28 MAY

The thesis project fair, Xjobbsmässan, was, due to the pandemic, launched online as a Digital Showroom which opened on 28 May at [ju.se/xjobbsmassan](https://ju.se/xjobbsmassan). A total of 26 thesis projects were presented by 42 students from various programmes at JTH. The Digital Showroom website attracted some 2,800 visitors. A new scholarship was awarded in the category Audience Favourite, voted for by visitors to the site.

The following degree projects were awarded scholarships:

**Best Business Potential:** *Streamlining Internal Materials Handling* by Christian Rosgren and Erik Nyqvist.

**Best Presentation:** *Designing a Line Balancing Tool for Reconfigurable Manufacturing Systems: A tool to support investment decisions* by Mohammed Elnourani Abdelmageed and Filip Skärin.

**Audience Favourite:** *Quality Perception Study in Sustainable Materials for Volvo Cars* by Irene Ramos Lapesa.

### Industriell produktutveckling, produktion och design



Betydelsen av tillförlitligt underlag vid identifiering av förluster



Effektivisering av intern materialhantering

### Logistik och verksamhetsledning



Utvärdering av dimensioneringsmetoder för att uppnå resultatförbättring



Ett nytt perspektiv på plastavfallsflöden - från linjärt till cirkulärt

## JTH MET ITS STRATEGIC PARTNERS IN SPARK AT HUSQVARNA

On 28 September, JTH held its annual meeting with strategic partners in the SPARK research and education environment. The meeting was held at Husqvarna.

JTH holds these meetings in order to deepen relationships with strategic partners in SPARK and to find out about their research agendas, challenges and strategies.

“We are keen to ensure that innovative and sustainable solutions to our strategic partners’ challenges can be realised, as well as to secure skills provision. All projects conducted in SPARK are based on issues of importance to industry and the solutions developed in coproduction,” says JTH’s Associate Dean of Research, Salem Seifeddine, who is keen to emphasise that, through SPARK, JTH can continue to contribute to societal development and ensure that the science makes it into tomorrow’s applications, thereby strengthening the competitiveness of Swedish industry.

### Presenting practical opportunities

Joel Karlsson, production engineering assembly manager at Husqvarna, feels that SPARK meetings are important as they present opportunities for practical collaborations within SPARK and the benefits they can bring to Husqvarna. Here, he mentions artificial intelligence (AI) as an area of interest to the company.



*Joel Karlsson, alumnus of JTH’s Logistics and Management programme, now Production Engineering Assembly Manager at Husqvarna.*

“We need to be at the forefront of manufacturing and it would be interesting

to see whether AI can create more efficient, quality-assured processes. SPARK also allows us to gain knowledge about AI from other companies and identify collaborations with JTH regarding how we can utilise AI,” says Karlsson.



*Magnus Willman, Plant Manager at Kongsberg Automotive.*

### “Important to keep up to date”

Kongsberg Automotive plant manager Magnus Willman notes that, due to the coronavirus pandemic, it has been quite some time since they attended this kind of meeting.

“We are perfectly capable of running the factory on a day-to-day basis, but it’s easy to lose track of what’s going on in our business environment. It’s important to keep up to date if we are to remain competitive and that’s why we’re here,” he explains.



## SEPTEMBERLJUS, 25 SEPTEMBER

On the evening of 25 September, around 600 people attended Septemberljus, an event arranged by 24 lighting design students from JTH in collaboration with Jönköping Municipality. This year’s theme was reuse and the students illuminated four sites around the square Hovrättstorget in Jönköping.





## JTH ALUMNI OF THE YEAR

In spring 2021, Jönköping University decided to launch a university-wide Alumni of the Year project, with one winner from each school. In previous years, JTH has made its own award. During the summer, 12 nominations were received for alumni of JTH, both internally and externally. JTH management whittled this down to two candidates for consideration by the President, who conferred the title on Anna Ekberg with the following justification:

*“Since graduating in 2011, Anna has worked as a lighting designer and has been involved in several acclaimed projects nationally and internationally for her new thinking. She has received the Swedish Lighting Award no less than twice. As an entrepreneur, with a lighting design company, Anna inspires many others in the industry as well as our students at the School of Engineering where she continues to contribute with knowledge and perspective from the industry.”*



## VERA-DAGEN, 26 OCTOBER



Vera-dagen is an annual event intended to increase interest in engineering degrees and the engineering profession in general among girls in upper-secondary school.

At Vera-dagen 2021, Johanna Linder, project and business development manager at ProFlow AB, Victoria Andersson, vehicle project coordinator at Dutch company Lightyear, and Maria Riveiro, professor of computer science at JTH, described their own journeys and experiences as engineers. They were then joined for a panel discussion by Adina Valjakka, a student at JTH, Sofia Wänge, technical salesperson at Front Automation AB, Sofia Davidsson, business and project developer at Qttech Group AB, and Kerstin Johansen, senior associate professor at JTH. The discussion was moderated by Erika Falk, president of HITECH.

You can see clips from the event at [ju.se/vera](https://ju.se/vera).



## KARRIÄRUM, 17 NOVEMBER



On 17 November, some 100 companies and 1,500 students attended Karriärum, JTH's fair for industrial placement courses and thesis projects. After last year's digital event, there was wide-spread appreciation of the physical fair.

Ingrid Wadskog, managing director and dean of JTH, feels that this year's Karriärum exceeded all expectations.

“There was expectation in the air before the fair and it turned out to be an incredibly successful event. I walked around the fair and spoke to the students, companies and staff, and everyone was pleased. There were a lot of people but no overcrowding; the students spread themselves out well among the companies,” says Wadskog.





## JTH AT ELMIA SUBCONTRACTOR, 9–12 NOVEMBER

Northern Europe's leading subcontractor fair, Elmia Subcontractor, welcomed around 750 exhibitors, a couple of hundred less than usual due to the pandemic.

JTH participated in Elmia Subcontractor in a number of capacities between 9 and 12 November. **Annika Engström**, senior lecturer at JTH, led a panel discussion on the research project Innovate, while 17 students from JTH took part in a sustainable production workshop with several companies.

The workshop was arranged by Gnosjö-based company MakersSquare with the aim of highlighting the innovative capacity of manufacturing companies to develop sustainable production and sustainable materials.

### “A major issue for our generation”

**Ida Fahlberg**, who is enrolled in the Master's Programme in Industrial Design at JTH, was one of the students who attended the workshop. “It's super interesting to hear about the specific challenges that companies face when it comes to sustainable production and sustainable materials, both current and future. This is going to be a major issue for our generation,” says Fahlberg.



Master's students Benjamin Fodor and Ida Fahlberg at JTH thought it was interesting to attend the workshop in sustainable production and sustainable materials with the company MakersSquare at Elmia Subcontractor.



Panel discussion about the research project Innovate, led by project leader Annika Engström (to the left).

## SPARK TALKS

SPARK Talks is a series of lunch webinars intended to highlight various topics that may be relevant to researchers or other staff working in projects.

### Three lunch webinars were held during 2021:

- The SPARK Award and Success Factors, with the winners of the 2020 and 2021 SPARK Awards.
- JTH Associate Dean of Research Salem Seifeddine and Anders Marén at Vinnova, discussed how Vinnova's funding structure supports SPARK's research areas within knowledge-intensive product realisation.
- Erik Eiliasson, senior research advisor at the President's Office, discussed the new EU Horizon Europe research and innovation framework programme, which will run from 2021 until 2027 with a total budget of €95.5 billion.

## KERSTIN JOHANSEN RECEIVES COLLABORATION AWARD

**Kerstin Johansen**, senior associate professor at JTH, was awarded the 2021 Collaboration Award in memory of Anders Ahlström. The prize is awarded by Automation Småland, a strategic collaboration between over 20 automation companies in the region.



Scan the QR code to read the jury's justification.



## SPARK ECG

A great deal of work has been performed during 2021 to develop a future digital platform for SPARK ECG. From 2022, all new and some existing projects will be phased into the new platform Koll365, which has been developed in collaboration with our IT partners JSC in Nässjö.

**13 SPARK ECG**  
Implemented in 2021

### Some quotes from industry partners on this year's ECG:

“Research is being conducted at a high level and this is something we couldn't do alone in-house.”

“The project has provided the company with the tools we need to develop as a single team, with everyone participating in our development.”

“The results of the project have exceeded all expectations.”

## COMPANY ECG

We use Company ECG to measure what companies think about their collaboration with JTH and what we can develop in the future. The survey is conducted every other year and 24 companies took part in spring 2021. Company ECG is implemented by Finnveden Säljkraft AB.

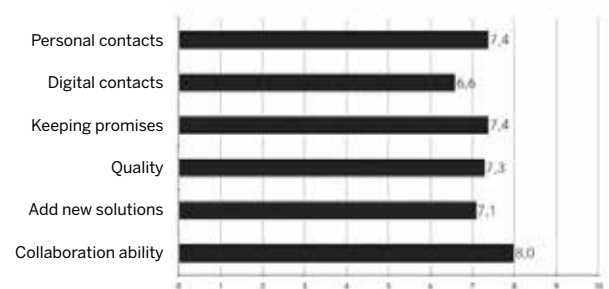
**24 COMPANY ECG**  
Implemented in 2021

Two paragraphs from the report are reproduced below.

### WHAT GRADE WOULD YOU GIVE JTH ON A SCALE 1-10?



### HOW WOULD YOU ASSESS JTH REGARDING THESE ASPECTS?



# UPDATES ON THE WEB

In Spring 2021, the JTH landing page was given a makeover and the alumni website was updated in the “new” style. JTH’s collaboration offer changed during the year, from 7 themes and 30 offers to a division into main offers, other offers and offers to established partners. This extended to changing the offer page on the website.

## School of Engineering

The School of Engineering in Jönköping is one of the country's largest educators of university engineers. We collaborate with the business community in the region so that students receive an education adapted to the needs of the market. Therefore, our educations include not only technical knowledge but also entrepreneurship, leadership, communication, sustainable development and the opportunity to make international contacts during the study period.

### Our educations



#### Study at School of Engineering

The School of Engineering offers education at bachelor, masters and doctoral levels (first, second and third-cycle levels), and 2-year courses at university college level and higher vocational education level.



#### Research

The research at the School of Engineering focuses on knowledge-intensive product realization in collaboration with the business community. We also run the research and education environment SPARK.



#### Collaborate with us

Research and education at the School of Engineering takes place in collaboration with the surrounding society, regionally, nationally and internationally.

## Collaborate with the School of Engineering

There are many benefits to collaborating with the School of Engineering. Our students are the innovators and employees of tomorrow who come out with the latest knowledge in their respective areas of education. Together with companies, such research and education are carried out with companies' challenges in focus. Below you will find several different offers and opportunities for collaboration as well as contact routes at the School of Engineering.

## School of Engineering Alumni Relations

We at the School of Engineering would like to have contact with you as an alumnus (former student). Together we can benefit from each other's knowledge and experience. The alumnus's experiences from working life and the knowledge they have about the School of Engineering are an invaluable asset for the school's development. At the same time, you as an alumnus can benefit from JTH by, among other things:

- Make contacts and take part in JTH's network for alumnus
- Be the important link for your company in contact with the School of Engineering
- Stay close to the latest knowledge and experience for example in a guest lecture



#### Be part of the network

Help us to create a strong engineering network. Many offers are open to develop skills, including through internationalization adapted for professionals with continuous education. Read more on our page for professionals.



#### Competence development

Help us to create a strong engineering network. Many offers are open to develop skills, including through internationalization adapted for professionals with continuous education. Read more on our page for professionals.



#### Collaborate with us

Help us to create a strong engineering network. Many offers are open to develop skills, including through internationalization adapted for professionals with continuous education. Read more on our page for professionals.



#### Nominate Alumni of the Year!

Alumni inspire new students and are the best ambassadors for our education. Have you got someone in your network who has done something out of the ordinary to benefit the next students at the School?



#### Alumni of the Year

Every year, the School of Engineering nominates Alumni of the Year. Best awarded of previous years are presented in Sweden this year.



#### Jobcenter

Through the job center (Jobberiet), you as an alumnus can also offer your education offers to current students, benefiting from JTH's reputation and it is also important to current jobs and career paths. Forward your registration as professionals' next employer.







## PRINTED MATTER

A number of print publications have been prepared during 2021, including an updated offers card, which is now available in three types rather than seven. The industrial placement course/thesis project brochure has also been updated. Printed matter is available in both Swedish and English.



## STUDENT RECRUITMENT

Eight videos were produced during spring 2021, in which students and alumni discuss their reasons for choosing to study at JTH. A catalogue of JTH programmes was prepared during the autumn to supplement the inspiration catalogue sent out each year by the Communications Department. During the autumn, Bright Mind Agency was also commissioned to produce four additional videos and an ad campaign on social media prior to the spring 2022 application period.



The JTH Programme Catalogue 2022/2023 had a print run of 22,000 copies and was sent to 20,000 third-year upper-secondary students on science or engineering programmes. The catalogue has also been sent to study and career counsellors.



Victoria Andersson and Aref Ashrafi were among the alumni who appeared in JTH's recruitment videos during the spring.



## NEW ADDITIONS TO THE IMAGE BANK

The services of a professional photographer were engaged in September to take new photographs. The new photographs will be available in Jönköping University's media portal at [ju.mediaflowportal.com](http://ju.mediaflowportal.com). You can see a selection of the new photographs below.



---

## UPDATED PHOTO WALL IN THE JTH LOBBY

As new photographs were available in the autumn, the opportunity was taken to replace the photos in the light boxes in the lobby. The images were selected by the departments.



# LinkedIn

LinkedIn January 2021–December 2021:

201 Posts  
 4,134 followers in total; 1,775 new this year  
 659 likes per month, total this year 7,912  
 342 comments  
 366 posts shared  
 Engagement rate (views-based) 3.98%  
 765 alumni  
 We have reached 618,889 people (342,885 people in 2020)

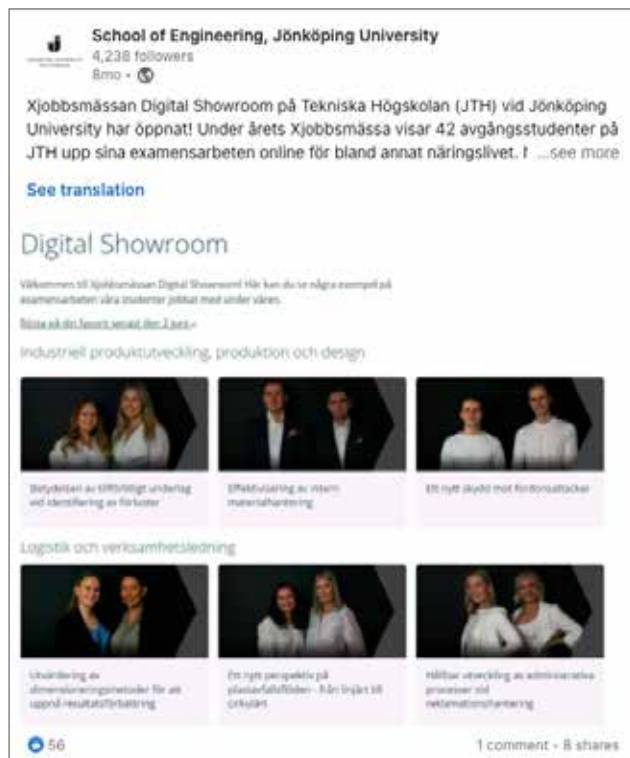
In 2021, JTH's LinkedIn profile category was changed from "company" to "higher education". This means that when a user adds JTH to their education in their profile, they will automatically be listed as an alumna or alumnus on JTH's LinkedIn page. Information about alumni is also displayed, including where they live and work.

During the year, JTH became one of the first Swedish higher education institutions to be approved for LinkedIn Live Video. Among other locations, live broadcasts were made from the Karriärum careers fair and the Husqvarna course opening exhibition.

The following posts attracted considerable attention.



Most views: 23,287; likes: 428; clicks: 848; and comments: 72



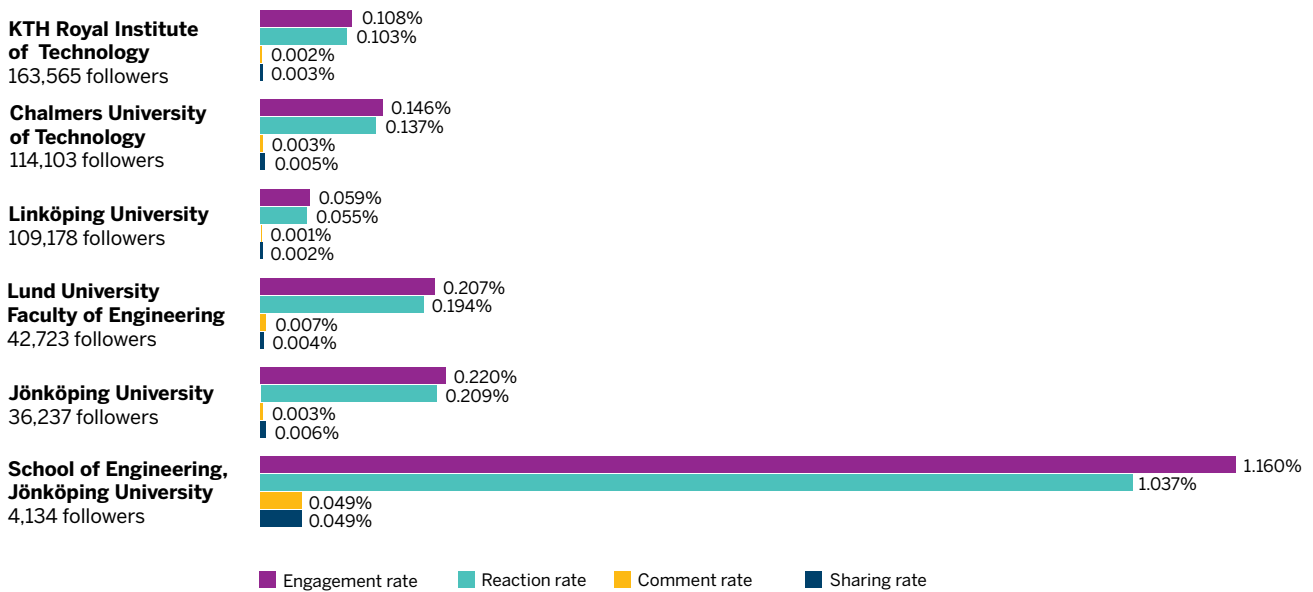
Highest engagement rate: 11.63%



Most shared: 22

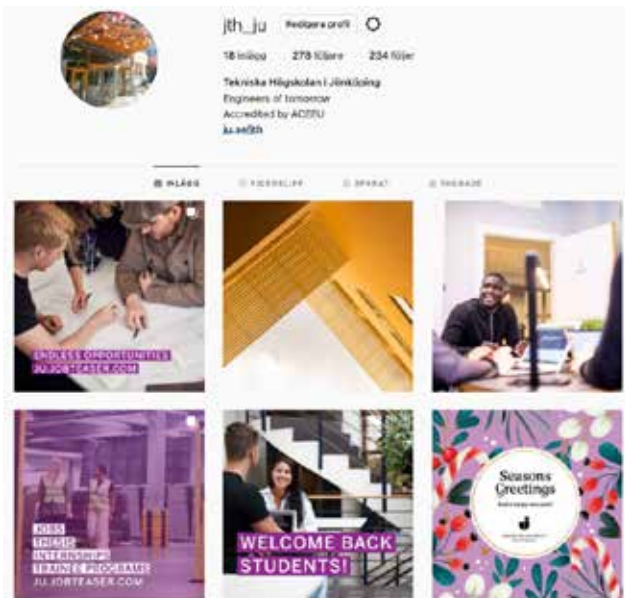
Examples of how JTH relates to other Swedish higher education institutions based on number of followers during 2021

The engagement rate measures the engagement of followers in the account's content based on likes, comments and shares.



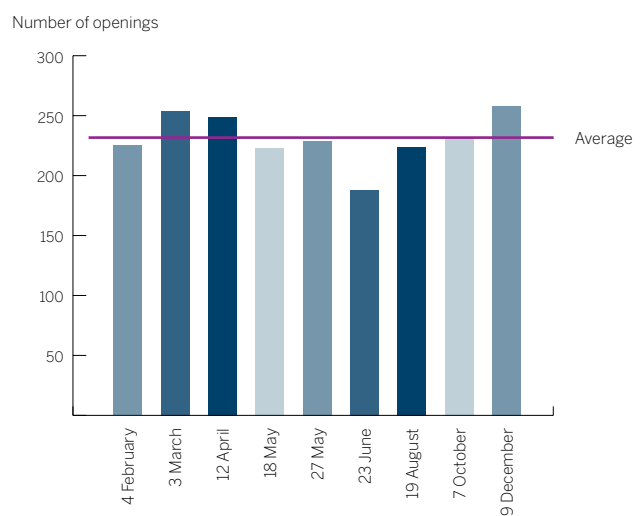
## INSTAGRAM

JTH launched an Instagram account in autumn 2021: @jth\_ju. While the account is primarily intended as an information channel for current students, it can also be used to reach prospective students, alumni and partner companies.



## NEWSLETTER

In 2021, JTH mailed out nine newsletters to 1,029 subscribers. On average, the newsletters were opened by 231 people. Several opened the newsletter several times, which may happen when forwarding to others.





# INTERNAL COMMUNICATION

In total, 95 intranet articles plus 41 news articles at ju.se or the research website related to JTH were published in 2021. You can see some examples below.



## COMPANY LIST 2021

List of companies/organisations that JTH staff had contact with during the year

3Button Group	Arkitekthuset i Jönköping	Bruzaholms bruk AB	Columbus
3M Peltor	Arkitekturanalys Sthlm AB	Bryne	Combi Wear Parts
3XN Architects	Arla	BSV Arkitekter och ingenjörer	Combitech AB
ABB	Astra Zeneca AB	Bubs	CompTech
AC Floby AB	Atea	Bufab Lann	Concrete print
ACC	Atelje Lyktan	Bufab Sweden AB	Conservator AB
AD Manus materialteknik	Atterfors Consulting AB	Building Point Scandinavia	Consid AB Värnamo
Adapt AB	Auralight	Butong	Consolis strängbetong
AddNorth	Autoliv	byBrick Interface AB	Control Depot
Adgrowth AB	Automotive Components Floby	ByggDialog AB	Contruster Engineering AB
AD-plast AB	AWAIO	Byggekologi Varis	Cornerstone Technologies SRL
AFRY	Axelent	Bokalders	COWI
AGES Casting Unnaryd	Baca light	Byggföretagen Skaraborg	Creative Technology Northern Europe AB
Agility	BAE SYSTEMS	Byggmax	Creative Works Sweden AB
Agroväst	Baettr Guldsmedshyttan	Byggmästarförening	Creo
AI Sweden	Beijingzhongweishi culture	Byggmästarna i Skåne	Cube Corner AB
Akademiker försäkringar	Belysningsbranschen	Byggnadstekniska Byrå AB	Cybercom
Akademiska hus	Bengt Erlandsson Design	Byggtjänst	Cygate
AKCon	Bergners Bil	CadCraft	DaloLinden
Akershus County Municipality	Bertil och Britt	Calås Innovation AB	Datakraft i Småland AB
Aktiebolaget Dahrénråd	Svenssons stiftelse för belysningsteknik	Camfil	DB schenker
A-lackering	BGR, Business Gnosjö Region	Camp Scadinavia AB	Delex
Alfa Quality Moving AB	Binovi AB	Campus Ljungby	Deloitte Zrt.
Alfa Skogsservice	BlockchainX AB	Candor	Delour AB
Alfasoft	Blue Wall Construction	Cardi	Derome Byggvaror & Träteknik AB
Algeco	Bläck & Co	Carefox	Designcentrum Jämtland
Allevi Group AB	BoKlok	Carlsberg Ramlösa	Designtak
ALMI	Bombardier Transportation Sweden AB	Castra	DHL Logistics
Alten	Bondtech AB	CEJN AB	Dick Birgerssons minnesfond
Altopounto AB	Borlänge Municipality	Centiro	Difi
AMB industri AB	Bosch Thermoteknik AB	Cervera	Digital Natives Ltd.
AndPeople	Bostads AB Vätterhem	Cetasol	Digtory AB
Andrenverken	Botkyrka Municipality	CGI Sverige AB	Distancify AB
Aneby Municipality	BreadeEscalope	Cind AB	Distriktsveterinärerna
Annell belysning	Brenderup	Cirkelbyggarna	Divid
Any4m AB	Brilliant Bilvård	Ciscon	Dizparc
AP&T	Bring Cargo International	Clas Ohlsson	Swedish National Courts Administration
APE Konsult AB	Bring Parcels AB	CloudIQ	Doxa Plast
Apple Inc.	Brixly AB	CNC Snickerier	
AQ ENCLOSURE SYST.		Cogent Power (Surahammars Bruks AB)	
Aritco AB		Colmeo AB	

Drake Analytics	Folke Bernadotte Academy	Hjältevadshus	Jyväskylä light festival
DT-konsult AB	FollowU AB	Holsbyverken i Vetlanda	Jönköpings Borgarekassa och Bjuggska fonden
Duroc Laser Coating	Formteknik i Gislaved AB	Holst entreprenad	Jönköpings Energi AB
EAB	Forsberg & Tibell Kyl	Hooks Herrgård	Jönköping Municipality, Urban Planning Department
Echo Graphic	Forsheda Hus	Horda Gruppen AB	Jönköping Municipality, Technical Services Department
Edströms AB	Fortinet	Hotell Nissastigen	Jönköpings läns byggmästareförening
EEF, Energi Effektiviserings Företagen	Fouroffice	HSB Göta	K.B. Components AB
EFKAB	Fresenius Medical Care	Huawei Tech AB	K.D. Feddersen Norden AB
EIT Manufacturing	Frid & hell ´s bygg ab	Hubbiot AB	KABE AB
Ekkono Solutions AB	Fristad plast	Hublys	Kajsa & co
Eko Instruments	Front Automation	Husqvarna Group AB	Kamisky
Eksjö Nu	Fundo	Hydro	Kapsch TrafficCom
Eksjöhus modulbygg ab	Föreningen bättre synmiljö	Höglandets samordningsförbund	Karema
Elajo el- och energiteknik AB	Försvarsmakten	IC Mercedes	Karl H Ström
Electrolux	Gamesys	ICP	KB Components
Elgiganten Logistik	Garlic Tech Kft	ldata	KD Feddersen
Elitfönster	GARO	IKEA	Keycast
Elmia AB	GBJ Bygg	IKEM	KEYnet Sweden AB
Emballator AB	Gela Plast AB	IKG	Kinnarps
Emballator Lagan Plast	Geodis Sweden	IMA Norscan	Kitron AB
EMBEDDEDART AB	Gjuteriföreningen	Industrial Development Center West Sweden AB	Klipsk AB
E-motions	GKN	Informationsbyggarna	Klättermusen
Energimyndigheten	Gnosjö Automatsvarvning	Infospread Euro AB	Know e AB
Engel	Gnosjöandans näringsliv	Ingelsten & Co	KnowIT
Enter Gislaved	Grafitgrå	Insatt	Koenigsegg Automotive
EON	Grand Public Communication	Interal AB	Kongsberg Automotive AB
Epiroc	Granges	INVID Jönköping AB	Kunnskapsbyen Lilleström
Erco	Graphmatech	Inwido	Kvadrat AB
Eriksson och Lönn	Greenworks Tools	iQiyi	KVM Golventreprenad
ESG	Gränges Sweden AB	IQ-Samhällsbyggnad m fl	City of Copenhagen
Eslöv Municipality	Gullåkra Consulting AB	Ire Metall AB	Lammhult
ETAP	Gärahovs Bygg	IRMA AB	Landskapsgruppen
Etteplan Sweden AB	Göte och Linnéa Öhrskogs Stiftelse	Isaberg	Lastbilscentralen
Ewes AB	Göteborgs Stads Leasing	ITAB	Leax Group AB
Fagerhults Belysning AB	Götenehus AB	Itab Shop Products AB	Lennartssons
Falks Metall AB	Hagab AB	JeldWen	LG Collection/Pelly Group
Fastighetsägarna	Jönköping Chamber of Commerce	Jernkontoret	Light Bureau
Fergas AB	Hans K Global Furniture	JGA Linneryd	LightGreen Health
Fergas North Europe	Havredals biodevelop AB	Jim Colin Ljusrådgivning	Lights in Alingsås
Fergin	Hedareds Sand & Betong AB	John Deere Forestry AB	Liljewalls arkitekter
Finnvedsbostäder AB	Hemfosa Fastigheter AB	Jolek i Tranås AB	Lindab
FlexApplications Sverige AB	Herenco AB	Swedish Board of Agriculture	Linde Material Handling AB
Flexator AB	Het lux lab	Jordi Hans Design	Lindholmen Science Park
Floby	Hidealite	JSC IT- Partner	
Flux	Hifab AB	JSL (Jan simon Light)	
Flygkraft AB	High Chaparral	JYSK Distribution Center	
Fläktgroup Sweden AB			



AB	Moramast	Orango AB	Rebel Light
Link Arkitekt	Morot	Orkla Wound Care	Red Capes
City of Linköping	Mpire AB	Oscar Pedersen AS	Redfield
LJ Produkter	MSM Forsheda Stålverktyg AB	P.O.P. Plating on Plastics AB	Reebel Control
Ljungsåsa	MySigma AB	P9 Projekt AB	Region Jönköping County
Ljus i Hus	Mötesplats Steneby/GU Ventures	Paddelarena Bankeryd	Region Jönköping County IT Centre
Ljusinitiativet	Naturbruksgymnasiet Stora Segerstad	Padelplay	Region Jönköping County Municipal Development
LMK Landskaps- & markkonsult Kenth Henriksson AB	Naturbruksgymnasiet Tenhult	Palmgrensgruppen	Region Jönköping County Regional Property
Logistic Professionals	NCC	Paloma designstudio	Region Kronoberg
Logistik konsult	Nefab AB	Paloma Ljusdesign	Region Sörmland
Logpoint South Sweden	Nelco Contact	Papaja AB	Rejlers
LP Tech AB	Netmine AB	PE Teknik & Arkitektur	Relevans
Lucky Seven	Nettans Skönhetsalong	Peab Sverige AB	Resinex
Luddox AB	Nevotex	Pelly	Resurs Bank AB
LUMA	Nexans	PINI Sverige AB	Riksbyggen
Lundbergs Pressgjuteri	NHO	Placell	RISE
Lund Municipality	Nilsson Crwth AB	Plan B BIM	RISE IVF AB
Länsförsäkringar Jönköping	NIMAB	Plant	ROL Ergo AB
Länsstyrelsen	Nitiu AB	Plecon AB	Rosti AB
M1NO	Nivika AB	PLM Group AB	SA Consult
MainQ	Nobia AB	Polarbröd AB	Saab AB
Maintrac	Nolliplan	Polykemi	Saab Avionics
Makersquare AB	Norconsult AB	Polymercentrum	Saab Training & Simulation
MAN	Nordic Furnaces AB	Polymertekniska Institutet AB	SAAN ENERGI AB
Maptun Performance	Norlux	Pontarius	Saiboo
Marbäck Tricot	Norrandsgjuteriet	Postnord	Sandvik AB
Maskinleverantörerna	North Castle AB	Powercell Sweden AB	Sandvik Coromant AB
Mastec	NovaCast Systems	Powerinit Sverige AB	Scanbox
Mastec Components	Novemberbolaget	PowUnit	Scania, Södertälje
Maxon	NPB Automation	Precomp solutions	Scania CV, Oskarshamn
Maxiom AB	NTNU	PreFast Sverige AB	ScapaInter
Mediaspjuth	NuVab	Preference	Science Park Jönköping AB
Merlinum Forklift AB	Näringslivsutveckling i Vetlanda	Previa	Science Park Skövde AB
micQ	Ny Studio	PreWoe	Sekonden IT AB
MILJÖBRON	Nyköping Municipality	PrismaTibro	Selmiteks Tekstil san.
Miljögiraff	Nära vård digitalt	Profilgruppen Extrusion	Semcon Sweden AB
MiMadre	Nässjö Affärsverk AB	Projektengagemang AB	Sensetime
MindRoad AB	Nässjö Municipality	Projektteknik AB	Separrett
MN light solutions	Nässjö Municipality, Urban Planning Department	ProLog Utveckling	Serneke Sverige AB
Modmo	Nässjö Näringsliv	PROTON Technology	Servicekuben
Modular	OBOS Sverige AB	Prototal AB	SEW Eurodrive
Modular Lighting Instruments	Odenfönster	Pythagoras	Shanghai 9you Network Technology
Moelven	One Partner Group	Qtech Group AB	Shanghai Kingdee Network
Moldex	Orange Cyberdefense	Randstad	SHIFT Electric Mobility
Monki (H&M Group)		Rapid Dimension	Sibelco Nordic AB
		RAW property	
		Read The Label AB	

SICS Outsourcing	Stora Enso Packaging	Tenzo AB	Veldi Kompetens
SIDA	Strusoft	Thage	Verendus System AB
Siemens Energy	STRÖMSHOLMEN AB	The Ethical Move	Vertex BD
Sigfrid Stenbergs	Svensk Byggtjänst	The Industry Sweden AB	Vesuvius Scandinavia
Sightline	Swedish-Ethiopian Association	Thermo-Calc Software AB	Vetlanda Municipality
Sigma Industry South AB	Svensk Ytbehandlingsförening (SYF)	Thule Sweden AB	Viadidakt
Sigma Technology MID	Svenska Hem AB	TietoEVERY Sweden AB	Vibracoustic
SigmaMecer	Swedish Institute (SI)	Tjolöholm Castle	Vinnergi AB
Sinf	Church of Sweden	Tjugotjugoåtta AB	Virtual Manufacturing
SinterCast AB	Svenskt Aluminium	TKL Logistics	Viskan System AB
Skanska Sverige	Swedish Construction Federation	Toolmarks	Visulent
Skara Municipality	Swedish Association of Graduate Engineers	Tosep Vision AB	Vix Speakit AB
Skaraborgs Byggprojektering	Svero Lifting AB	Tower of Babel Education Co Ltd	VM EXIM SERVICE
Swedish Tax Agency	Svetruck AB	Toxic Interactive Solutions AB	Volvo AB
Skedsmo Municipality	SVP Worldwide	Swedish Transport Administration	Volvo Cars
SKF Mekan	Swadara Engineering AB	Tranås Resebyrå	Volvo Construction Equipment
Skogslunds Gjuteri	Sweco	Tranås United	Volvo Group IT
Skogsstyrelsen	Swecon	TREEM/Thor of Sweden	Volvo Group Trucks Operation
Skolfastigheter i Stockholm AB	Anläggningsmaskiner AB	Trelleborg Sealing Solutions	Volvo Penta
Swedish National Agency for Education	Swedev	Tribia	Volvo Personvagnar
Skrida AB	Swefos AB	Trimble	Volvo Powertrain Production
Skånetrafiken	Swegon Operations AB	Trivselhus	Volvo Technology AB
Skärteknikcentrum	Swerea Kimab	True & Elegant	VPS
Skövde Municipality	Swerea Swecast	Träcentrum	Värnamo Municipality
Smålands Produktivitetsförening	SWEROX	TUC YH	Värnamo näringsliv
Smålands Stålgjuteri	Symmetry	Tunga fordon	W Must AB
Sogeti Sverige AB	Sävsjö Municipality	TURA	WBA
Soliber ingenjörer AB	Sävsjö Näringslivs AB	Turab	Weland Solutions
Somsri Garment Company	Södra Munksjön Utvecklings AB	Tyréns sverige	Weland Stål AB
Sordin	Tacton	Tänk-Om	WESTAL AB
Space Maker	Tapwell	UD Trucks	Wester+Elsner Arkitekter AB
Sparla AB	Taylorl AB	Ulricehamn Municipality	White arkitekter
Spotify AB	TeamEngine	Ultrapolymers Nordic AB	Wilhem AB
Standex Engraving Sweden AB	TeamOlmed	Unicarriers Europe AB	Winell och Jern arkitekter AB
Statens fastighetsverk	TECCA	Universal Prediction	Wingårdhs arkitekter
Stavanger Steel AB	Association of Swedish Engineering Industries	Unnaryds modell AB	Wirtgen Sverige AB
Stema	Teknisk Fastighetsservice	Utvecklingscenter för Fältservice tekniker	Wisest
Stena Aluminium	Tekniska föreningen i Jönköping Minnesfond	VA Syd	Wog Trä
Stena Line AB	Tekxel	Vaggeryd Municipality	Woolpower
Stena Recycling AB	Telia Company	Valmet AB	WSP group AB
Stitec	Tells	ValueOne	XAL
Stockholm Lighting	T-Emballage Förpackning	Valuesmatch AB	X-cen
City of Stockholm Development Office	Tengbom	Vara byggkonsult AB	Xense Vision AB
City of Stockholm		Vasakronan AB	Xylem Water Solution Manufacturing AB
		VBG Truck Equipment	Yaksha Visual Technologies
			Yansu

YASKAWA  
Yellon Arkitektur  
Yibber  
YLAB Larssonbygg  
Yovinn  
Zero  
Zilverware/Sensorbee  
Zitac  
Zmarta  
Zynka/Semren Månsson AB  
ÅF-Industri AB  
Åhlin & Ekeroth  
Ätbart  
Öhlins  
Österby Gjuteri  
Östrand & Hansen AB





**Helena Zar Vallin**  
CEO, Jönköping  
Chamber of Commerce



JTH is an obvious partner for the Chamber of Commerce in the continued good collaboration between academia and the business community, in which JTH is a very important stakeholder in ensuring that companies continue to develop and have access to skills. JTH is good at maintaining broad contacts with the business community, as a visible and active promotor of commerce throughout the region.



**Andreas Rangert**  
VP Product Management &  
Development, Husqvarna



It is important that the region continuously develops and that competence increases over time. It is therefore vital to contribute to ensuring that Jönköping and the surrounding area continues to become even more attractive as a region in which to study, work and live. We see collaboration with JTH as an important part of achieving this and for the Husqvarna Group remaining competitive globally.



**Karl-Johan Magnusson**  
SVP Product Development  
Thule Group



We should always be at the forefront of developing and designing smart, high-quality products that help users to live an active life. Collaboration with JTH gives us access to a deep well of engineering expertise and a great deal of energy in the students' engagement. It is also a way for us to establish valuable contacts for future employment.



**Johanna Nilén**  
Consultant Manager,  
Combitech AB, Jönköping



Working with Jönköping University and JTH comes naturally to us given our existing collaborations, whether that be industrial placement courses for students or various types of research collaboration in fields such as AI and digital transformation, as well as other important industrial contexts through SPARK. This provides us with an opportunity to define our profile and strengthen cooperation with our customers so that together we can develop the local skills profile in the region.

